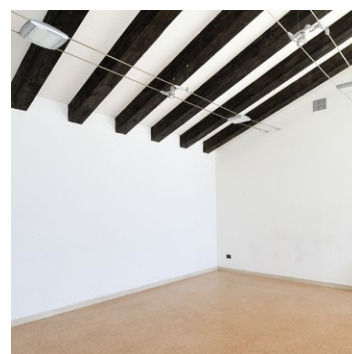


# Serre / Sala 2

Villa Widmann Rezzonico Foscari



All'architettura settecentesca della Casa Dominicale e della Barchessa si aggiungono le **Serre**, luogo che un tempo accoglieva piante di limoni e agrumi. Oggi completamente ristrutturate, affacciate sulla *Terrazza*, illuminate da ampie finestre e circondate dal parco monumentale, le **Serre** rappresentano la soluzione ideale per piccoli meeting, conferenze stampa, workshop, summer school, servizi di catering.

## SPECIFICHE

- › piano terra
- › capienza: 12 posti
- › dimensioni: 5,82x5,05 m; H 6 m
- › wi-fi
- › dotazione tecniche, pag. W8

Completing the house and the arcade's 17th-century architecture are the **Greenhouses**, in which lemon and other citrus trees once grew. Entirely renovated, overlooking the terraces, lit by large windows and surrounded by the monumental park, the Greenhouses are an ideal location for small meetings, press conferences, workshops, summer schools and catering services.


## SPECIFICATIONS

- › ground floor
- › maximum capacity: 12
- › dimensions: 5.82x5.05 m; H 6 m
- › wi-fi
- › technical facilities, page 2


## CONTACT

villawidmann@servizimetropolitani.ve.it

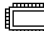
---

 12 posti/seats

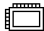
---

 10 posti/seats

---

 6 posti/seats

---

 8 posti/seats

---

## dotazione tecniche e logistiche technical and logistical facilities

---

### Spazi polifunzionali Multi-functional spaces

20 pannelli espositivi completi (187x119 cm)  
9 cavalletti portaquadri  
2 pannelli (250x94 cm)  
20 sedie pieghevoli nere senza braccioli  
1 tavolo tondo per conferenze (4 posti)  
1 schermo per proiezione diapositive

30 sedie beige mod. regista  
1 tavolo relatori 3/4 posti

80 sedie grigie mod. regista (seduta singola)  
35 sedie grigie mod. regista (seduta tripla)  
10 tavoli da esterno in acciaio tondi (Ø 75 cm)

20 complete exhibition panels (187x119 cm)  
9 easels  
2 exhibition panels (250x94 cm)  
20 black armless folding chairs  
1 round conference table (seats 4)  
1 projection screen

30 beige director's chairs  
1 speakers' table, seats 3 or 4

80 grey director's chairs (single seat)  
35 grey director's chairs (triple seat)  
11 steel round outdoor tables (Ø 75 cm)

---

Le dotazioni indicate si riferiscono all'attrezzatura presente in sala, che può essere integrata con noleggio di servizi esterni  
La rete wi-fi di Villa Widmann non richiede nessuna procedura di accreditamento

The indicated facilities refer to the equipment present in the room or hall and can be supplemented by hiring from external services  
The wi-fi coverage provided by Villa Widmann does not require any accreditation procedure